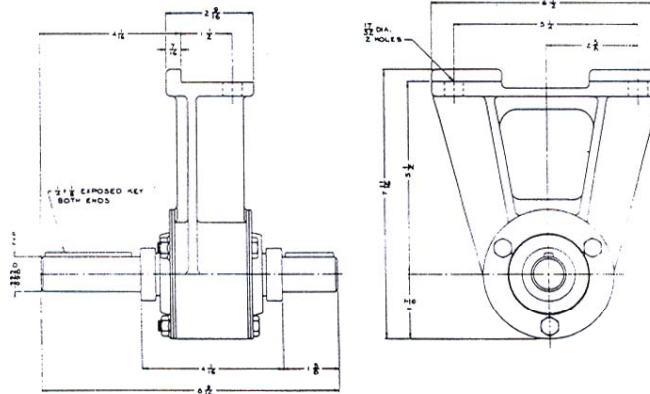


## HANGER BEARING PERFORMANCE DATA

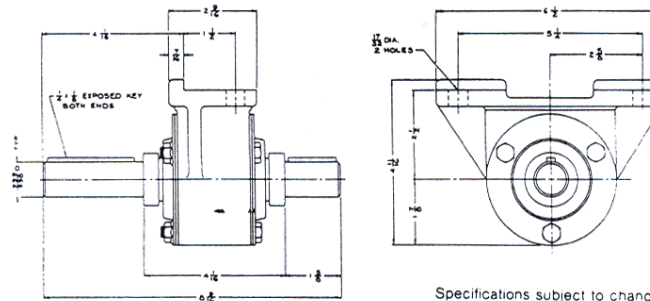
|   | Model<br>M3<br>M3S | Model<br>M12<br>M12S | Model<br>M50 |
|---|--------------------|----------------------|--------------|
| Rated Horsepower, (HP) . . . . .  | 13                 | 32                   | 77           |
| Maximum Static Torque, inch. (lbs.) . . . . .   | 1,385              | 4,035                | 17,580       |
| Maximum Dynamic Torque, inch. (lbs.) . . . . .  | 995                | 3,070                | 13,500       |
| Maximum Speed at Rated Torque, (RPM) . . . . .  | 800                | 660                  | 360          |
| Maximum Static Side Load at 7/8" from edge of<br>bearing lock collar, (lbs.) . . . . .  | 955                | —                    | —            |
| Maximum Dynamic Side Load at 7/8" from edge of<br>bearing lock collar, (lbs.) . . . . . | 685                | —                    | —            |
| Maximum Static Side Load at 1-1/4" from edge of<br>bearing container, (lbs.) . . . . .  | —                  | 2,785                | —            |
| Maximum Dynamic Side Load at 1-1/4" from edge of<br>bearing container, (lbs.) . . . . . | —                  | 2,120                | —            |
| Maximum Static Side Load at 1-5/16" from<br>shoulder of shaft, (lbs.) . . . . .         | —                  | —                    | 9,100        |
| Maximum Dynamic Side Load at 1-5/16" from<br>shoulder of shaft, (lbs.) . . . . .        | —                  | —                    | 6,985        |

## BRADEN MODEL M3 & M3S HANGER BEARINGS

M3-L104D-0

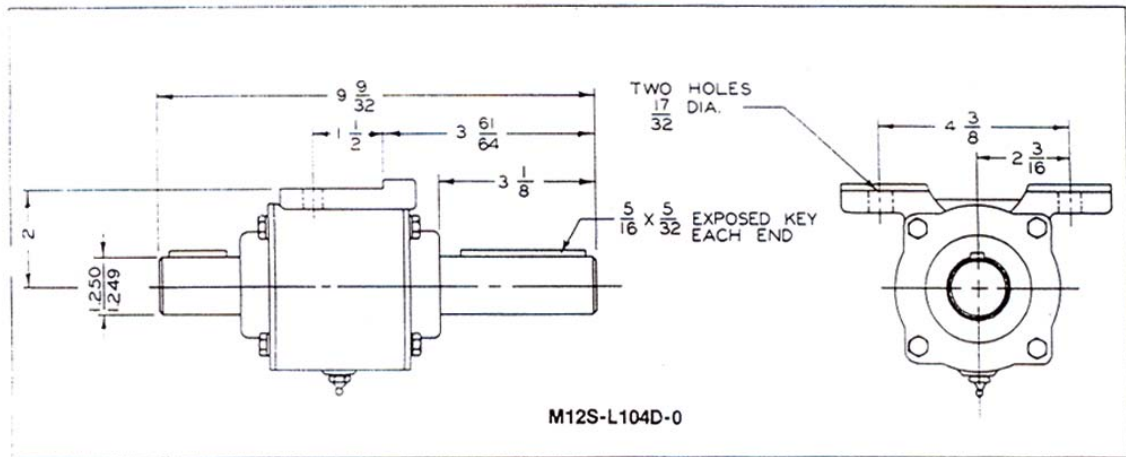
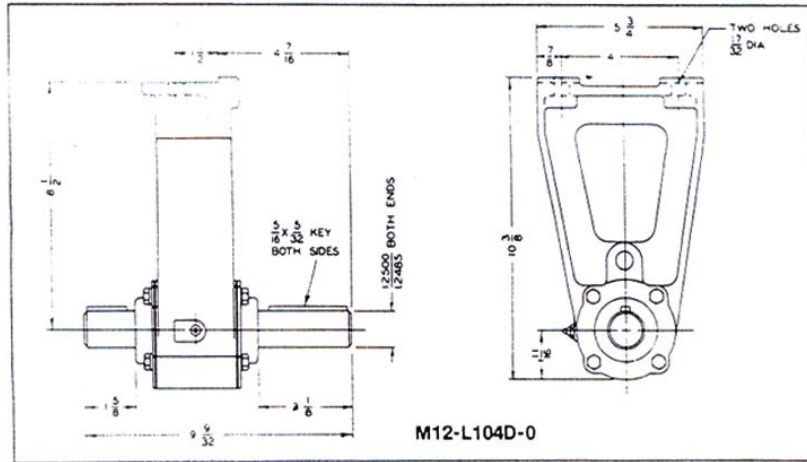


M3S-L104D-0



Specifications subject to change

## BRADEN MODEL M12 & M12S HANGER BEARINGS



## BRADEN MODEL M50 HANGER BEARING

