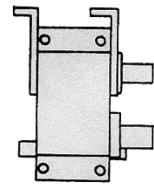
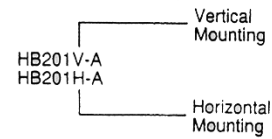


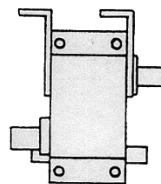
Models/Configurations Available

HB 201 2 Speed Hanger Bearing

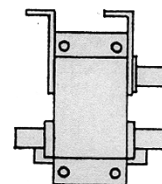
All Shafts 1 1/4"
Low Speed Ratio 1.61:1
High Speed Ratio .61:1
Torque Rating 140 Lb Ft
Unit Shipped Less Oil — Fill with any commercially available 90 wt. EP



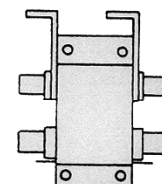
Model — HB201V-A
One Input Shaft
One Output Shaft



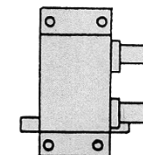
HB201V-B
One Input Shaft
One Output Shaft



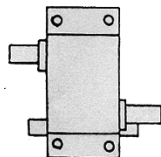
HB201V-C
One Input Shaft
Two Output Shafts



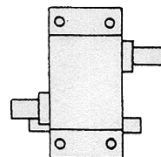
Model — HB201V-D
One Input Shaft
Three Output Shafts



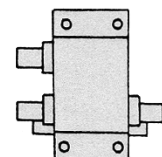
HB201H-A
One Input Shaft
One Output Shaft



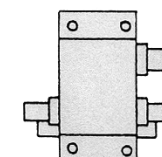
HB201H-B
One Input Shaft
One Output Shaft



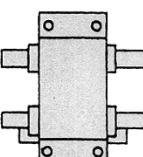
Model — HB201H-C
One Input Shaft
One Output Shaft



HB201H-D
One Input Shaft
Two Output Shafts

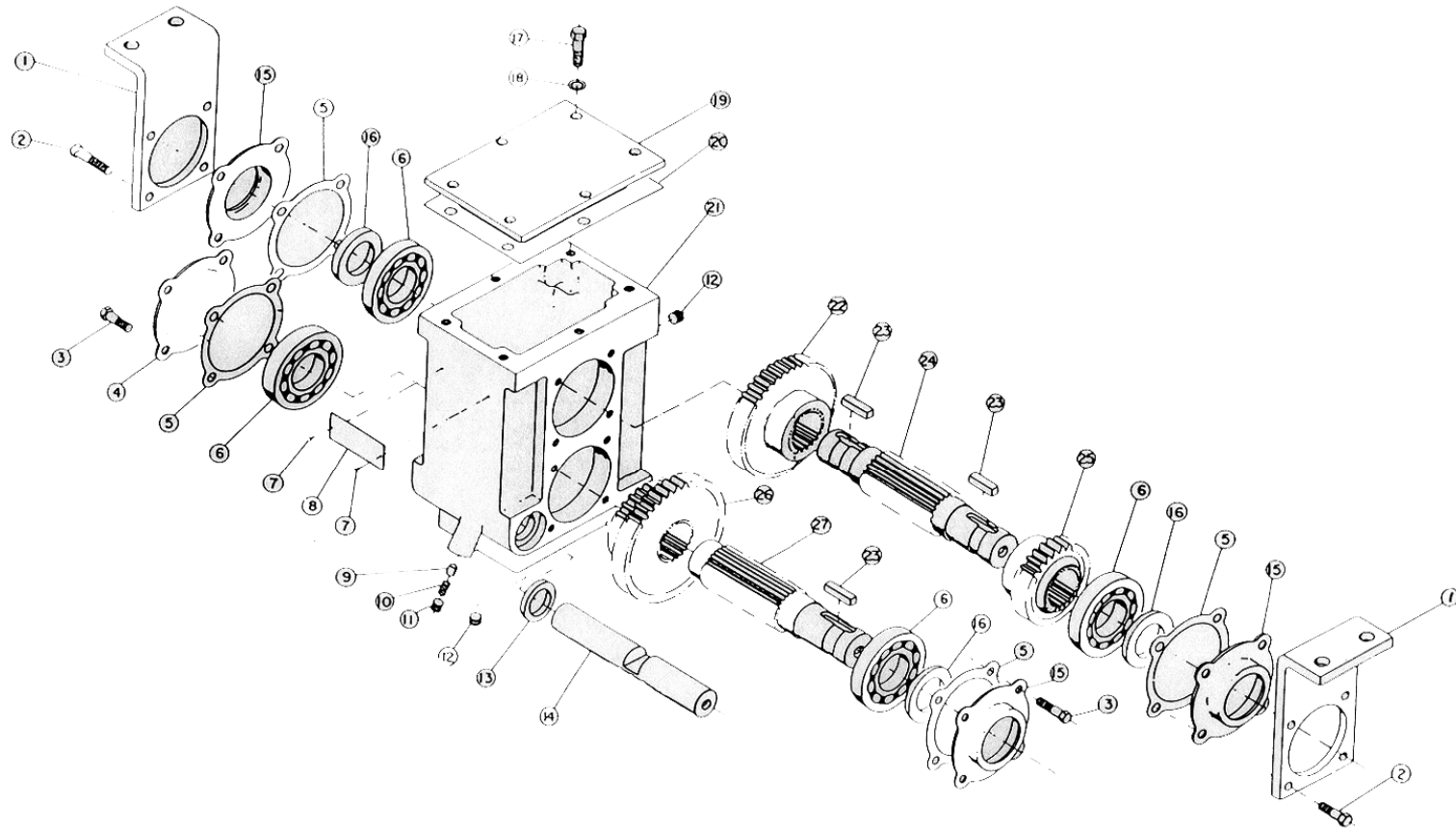


HB201H-E
One Input Shaft
Two Output Shafts



Model — HB201H-F
One Input Shaft
Three Output Shafts

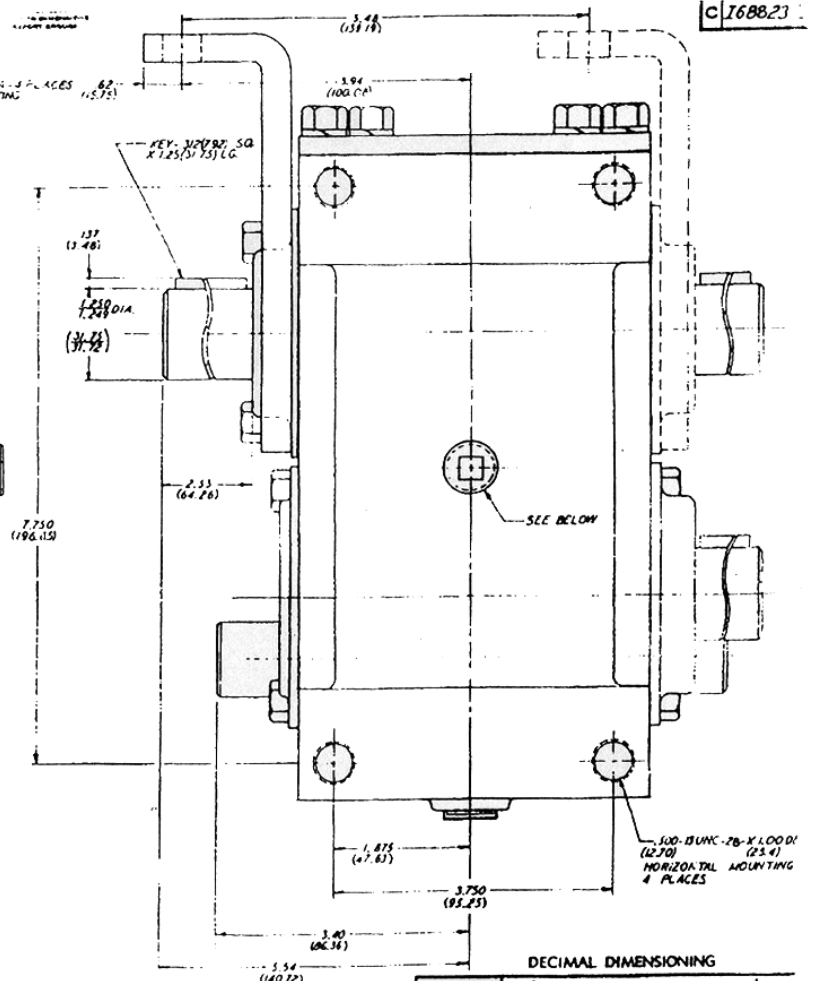
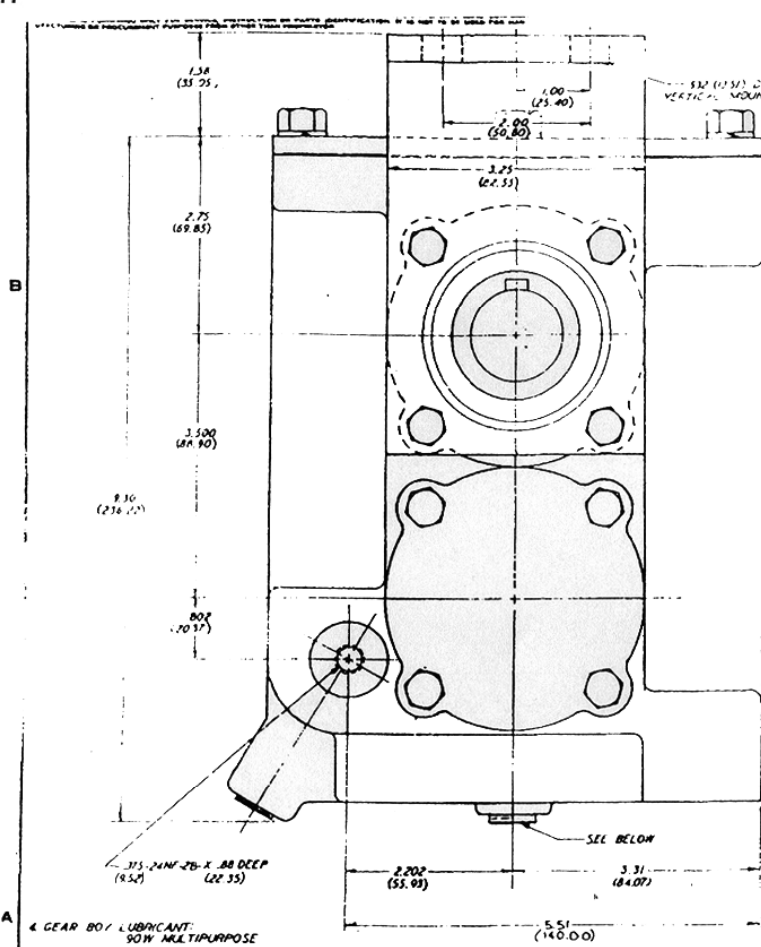
HB201



MODEL HB 201 Ratios:
HP 70 - Low
Rating Range .625:1 Reduction
 50 - High
 Range 1.626:1 Increaser
SERIES HB 201
SPEEDS 2

<i>Item</i>	<i>Part No.</i>	<i>Description</i>	<i>Qty</i>
1	27505	Bracket	2
2	27718	Screw	8
3	28578	Screw	8
4	34323	Cap (Was 21669)	1
5	21670	Gasket	4
6	21017	Bearing	4
7	21775	Drive Screw	2
8	24043	Nameplate	1
9	31352	Poppet	1
10	28717	Spring	1
11	23521	Plug	1
12	32220	Plug	3
13	24180	Seal	2
14	32189	Shaft	1
15	34763	Cap (Was 21528)	2
16	21015	Seal	4
17	20522	Capscrew	6
18	20518	Washer (Was 20526)	6
19	31358	Cover	1
20	31359	Gasket	1
21	31355	Housing	1
22	31351	Gear	1
23	20105	Key	3
24	32190	Shaft	1
25	31350	Gear	1
26	31353	Gear	1
27	32191	Shaft	1





c168823

4 GEAR OIL LUBRICANT:
SOW MULTIPURPOSE

3 PERFORMANCE DATA

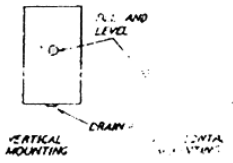
SPEED RATIOS
OUTPUT TO INPUT
HIGH 1.625:1
LOW 6.5:1

RATINGS

MAXIMUM RECOMMENDED
INPUT SPEED: 1500 R.P.M.

MAXIMUM TORQUE 175 LBS-FT-MIN (24.20 KG-M)
275 LBS-FT-MIN (38.00 KG-M)

MAXIMUM OUTPUT	LOW	HIGH
500 R.P.M.	26 HP (19.30 KW)	17 HP (12.60 KW)
1000 R.P.M.	52 HP (38.76 KW)	33 HP (24.61 KW)
1500 R.P.M.	78 HP (58.14 KW)	50 HP (37.20 KW)



ALL DIMENSIONS NOMINAL UNLESS OTHERWISE SPECIFIED
DIMENSIONS IN PARENTHESES ARE METRIC AND IN MILLIMETERS (MM) UNLESS OTHERWISE

DECIMAL DIMENSIONING

VICKERS TULSA DIVISION TULSA, OKLAHOMA		CASTING NO.	
WITH MODEL NO. 501 N-V SERIES		HANGER BEARING	
APPLICABLE SPECIFICATIONS	DATE BY	DATE	DATE
UNLESS OTHERWISE SPECIFIED	RELEASE	TYPE	DATE
9 PLACE FIGURES	REV	REVIEW	SCALE/FULL
3 PLACE DECIMALS = 0.008	DATE	DATE	HEAT TREATMENT
1 PLACE DECIMALS = 0.016	DATE	DATE	MATERIAL
DIPT DRILLED HOLES	DATE	DATE	PROG.
ANGULAR DIMENSIONS ± 1°	DATE	DATE	PROD.
CONTOUR ACCY ± 0.010 TIR MAX.	DATE	DATE	
FILLET RADIUS .125	DATE	DATE	
1	5.51 WAS 6.86	12-16-81	KS
REV	REVISION	DATE	BY

HB201